



FACTSHEET

On 1 January 2021, the United Kingdom leaves the European Union and becomes a third country.

- All goods either entering the European Union from the UK or entering the UK from the EU must be declared to customs.
- The new procedures particularly apply to traffic using the ferry links.

I am a TRANSPORT OPERATOR - what do I have to do?

Get prepared & anticipate as much as possible

Get prepared

Find out

- About the formalities that are obligatory after 1 January 2021 for road transport operators carrying exports and imports between the UK and France.
- Check that the goods carried are not "sensitive", prohibited or subject to restrictions after 1 January 2021.



For FR/UK "Export" transport

EXPORT

Get the necessary information and share it

- Make sure I have and provide drivers with:
 - ✓ A phone number to reach the shipper and/or the customs declarant for the goods, if necessary.
 - ✓ If necessary, drivers must be able to reach their manager quickly, who will contact the shipper or the customs declarant.
- Make sure I know and provide drivers with Information on the status of the goods carried, so that they can complete the ferry company boarding questionnaire:
 - ✓ Whether under the TIR or ATA system
 - ✓ Declare the lorry empty if it is not carrying any goods



FACTSHEET

Gather the necessary documents and give them to the drivers

- Pass on clients' documents with the MRN bar codes to the drivers
(So that they can be scanned by the ferry company before boarding)



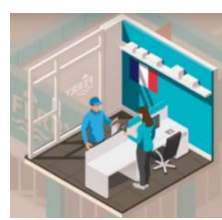
MRN bar code(s)
(from the customs declaration).

Inform drivers on the new boarding procedures in France

- Lorry drivers
 - ✓ Must have the MRN bar code(s) when boarding in addition to the CMR and their identity documents, etc.

The document will be scanned by the ferry company

- ✓ Drivers will then complete a questionnaire before boarding



Smooth traffic flow will depend on drivers being properly informed



**NO MRN BAR CODE
NO BOARDING**





FACTSHEET

For UK/FR "Import" transport

IMPORT

Complete the ICS Safety & Security formalities with or without the assistance of an external partner

- New import Safety & Security formalities, the ICS (Import Control System), will be obligatory for transport operators (or the ferry company for unaccompanied trailers) for all crossings between the UK and France (imports), and an entry summary declaration (ENS) must be submitted before arriving in France
- These formalities can be completed by the transport operator if they have the necessary interface or entrusted to a forwarding agent.

What is ICS?

- The Import Control System (commonly known as ICS) is a Safety & Security system for imports into the European Union, set up by the European Commission.
- The information exchanged allows customs to carry out a risk analysis and decide whether or not to check the goods on arrival in France.
- The Import Control System requires operators to upload an entry summary declaration (ENS) for all non-Community goods imported into the EU, at the first point of entry into the Union.
- Under the current regulations the ENS is submitted by the person bringing the goods into the EU.

The transport operator is responsible for the ICS declaration, which must be sent at the latest 1 hour before the goods arrive in France.



**IF ICS IMPORT FORMALITIES HAVE NOT BEEN COMPLETED
THE DRIVER'S STATUS ON ARRIVAL WILL BE ORANGE**



- Make sure I have and provide drivers with:
 - ✓ Phone numbers to reach a company manager, a shipper and/or the customs declarant for the goods, if necessary



FACTSHEET

- Make sure I know and provide drivers with Information on the status of the goods carried, so that they can complete the ferry company boarding questionnaire:
 - ✓ TIR or ATA system?
 - ✓ Lorry empty?
 - ✓ SIVEP or NOT?
(whether the load means a stop at the health, phytosanitary or veterinary inspection centre (SIVEP) is necessary on arrival in France)

Gather the necessary documents and give them to the drivers

- Pass on clients' documents with the MRN bar codes to the drivers
(So that they can be scanned by the ferry company before boarding)



MRN bar code(s)
(from the customs declaration).

Inform drivers on the new boarding procedures in the UK

- They now need to have new documents when boarding in addition to the CMR and their identity documents, etc.:
 - The MRN bar code(s) (from the customs declaration),
 - Where applicable
 - ✓ Health, phytosanitary or veterinary certificates
 - ✓ TIR or ATA carnet
- ✓ Drivers have to complete a questionnaire before boarding





FACTSHEET

Inform drivers about the possible procedures on disembarking in France

- During the crossing, the bar code document scanned on boarding is sent to the French customs smart border system "SI BREXIT" which informs the ferry company
- The ferry company informs the driver of the status of the goods in real time via:

- Display screen on the ferry
- SMS sent to the driver
- Ferry crew
- Unloading deckhand



What are the possible statuses?

- The lorry's status is

GREEN

→ The lorry can leave the terminal
(After the driver has completed the identity formalities at the border)

- The lorry's status is

SIVEP

→ The lorry must go to the SIVEP health, phytosanitary or veterinary inspection centre

- The lorry's status is

ORANGE

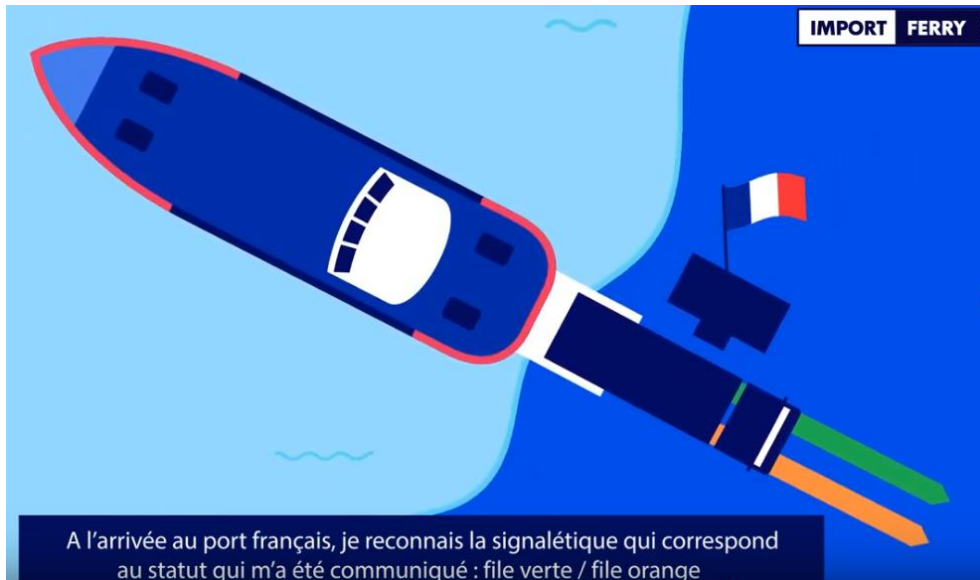
→ The lorry must park in the dedicated area at the terminal



FACTSHEET

What must they do on leaving the ferry?

- The driver must follow one of the channels marked



GREEN/ORANGE/SIVEP

[image: On arriving at the French port, look out for the signs corresponding to the status given: green channel/orange channel)



- If the lorry's status is Orange, they must wait in the Orange parking area
- The driver must then call their manager, or shipper or the customs number provided to complete the correct formalities
- Special support crew are provided by the ferry companies to assist lorry drivers with disembarkation:
 - Identification of status: GREEN/ORANGE/SIVEP
 - Identification of the channel to follow: Exit/Orange parking area/SIVEP



FACTSHEET

- Identification of any formalities not yet accomplished or still required
- When the warrant is issued by customs, the lorry's status changes to green and the lorry can leave the ferry terminal.



See the fact sheet
"I am a driver and my lorry's STATUS is ORANGE"